



Jeep Grand Cherokee WK2

MY2011-2021

Nudge Bar

IMPORTANT! – READ BEFORE INSTALLATION

- This product must be installed exactly as per these instructions using only hardware supplied.
- Take a few moments to read instructions thoroughly before beginning work.
- In the event of damage to any component please contact OFFROAD ANIMAL to arrange repair/replacement of components.
- Do not use this product for any vehicle make or model other than that specified on these instructions.
- Do not remove labels from this product.
- This product and its fixings must not be modified in any way unless stated in these fitting instructions.
- The installation of this product is recommended for trained personnel.
- These instructions are correct at time of publication. OFFROAD ANIMAL cannot be held responsible for the impact of any changes subsequently made by the vehicle manufacturer. If you find something has changed please contact us to let us know!
- During installation it is the duty of the installer to check correct operation/clearances of all components.
- If Instructions are to be printed for reference in the workshop, it is recommended that they are printed in colour, for best legibility.
- Estimated Fitting time 1 hour

GENERAL CARE AND MAINTENANCE

Only wash the product with a PH neutral car wash to prevent paint damage and discolouration.

Plastic parts may be maintained with silicone spray.

Do not use acidic or alkaline based cleaning products.

It is important to perform regular checks (pre trip or on an annual basis) on the installed product. Checks include:

- Visual inspection for damage (eg. cracks, chips, dents etc.)
- Electrical wiring is not rubbing anything or worn out
- Bolts are torqued to correct specification (see torque guide below)

For touching up small stone chips, Offroad Animal recommends the following paint products:

- Dupli-Color Trim & Bumper Paint Black (TB101)
- VHT Hood, Bumper & Trim Paint Black (SP27)

BOLT TORQUE SETTINGS

Use the following bolt torques on all general fasteners, unless otherwise specified.

GENERAL FASTENERS	
Size	Torque Nm
M5	5 Nm
M6	9 Nm
M8	22 Nm
M10	44 Nm
M12	77 Nm

Use the following bolt torques on all structural front bar mount and tow point fasteners, and rear towbar fasteners, unless otherwise specified.

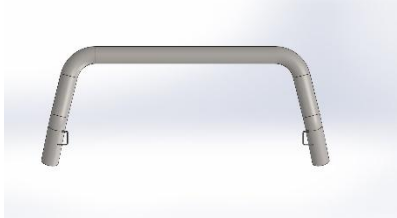

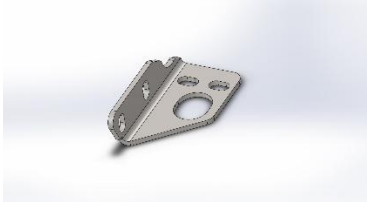
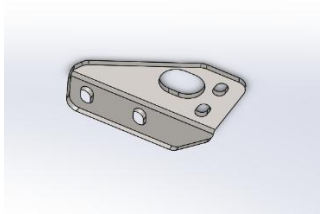
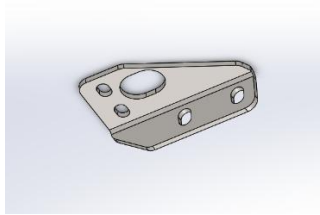
FRONT BAR MOUNTS AND TOW POINTS + REAR TOWBAR	
Size	Torque Nm
M10	57 Nm
M12	100 Nm
M14	164 Nm
M16	248 Nm

Always use a torque wrench to set correct torque settings. Ensure torque wrench is set to Nm unit of measurement. Otherwise perform conversion to lb-ft.

PARTS LISTING

IMPORTANT: Check all parts are present before beginning work! Contact OFFROAD ANIMAL if something is missing.

Main Parts – In the Box

Qty	Part Number	Description	Image
1	NB-JGC-WK2-11-ASM1	WK2 NUDGE BAR WELDMENT	
1	RP-JGC-WK2-11-ASMO	RECOVERY POINTS WK2	
1	B-0056R	NUDGE BAR MOUNT RH	
1	B-0056L	NUDGE BAR MOUNT LH	
1	B-0325R	2017 PR nudge bar bracket RH	
1	B-0325L	2017 PR nudge bar bracket LH	

Small Parts – Contained in Small Parts Kit Bag

Qty	Part Number	Description
4	M10 x 40	M10 x 40 Hex bolt zinc plate
8	M10 FW	M10 Flat washer
8	M10 FN	M10 Flange nut
4	M10 x 25	M10 x 25 hex bolt zinc plate

TOOLS REQUIRED

The following tools will be required to install the product.

Hand Tools	Power Tools	Workshop Equipment
10mm Spanner 16mm Spanner 10mm Socket 13mm Socket 16mm Socket Ratcheting Socket Wrench 5mm Allen Key	None	None

GENERAL WARNINGS


This nudge bar must be fitted on to Offroad Animal tow points.

The tube measures 2.5", any aftermarket clamps that suit 2.5" will suit to mount accessories like lights or antennas. Note the tube may be made out of 60.3mm tube so make sure your brackets can suit.

Some models 2017-2020 have super sensitive parking sensors and will not work with this nudge bar

WORKSHOP SAFETY

It is the responsibility of the installer to always complete works in a safe manner. Make sure the following safety equipment is available and precautions are observed whilst fitting this product.

<p>Hearing Protection</p> 	<p>Always wear ear protection when using power tools.</p>
<p>Eye Protection</p> 	<p>Ensure eye protection is always worn when cutting or drilling.</p>
<p>Manual Handling</p> 	<p>Do not attempt to lift bar assemblies or rock sliders on your own.</p> <p>Always use two people to lift or use mechanical Lifting aid such as hydraulic lifting trolley.</p>
<p>Vehicle Support</p> 	<p>Always ensure vehicle is properly supported when working on it. Do not attempt to fit products whilst suspension work is being carried out. Do not work under a vehicle supported only by a jack.</p>



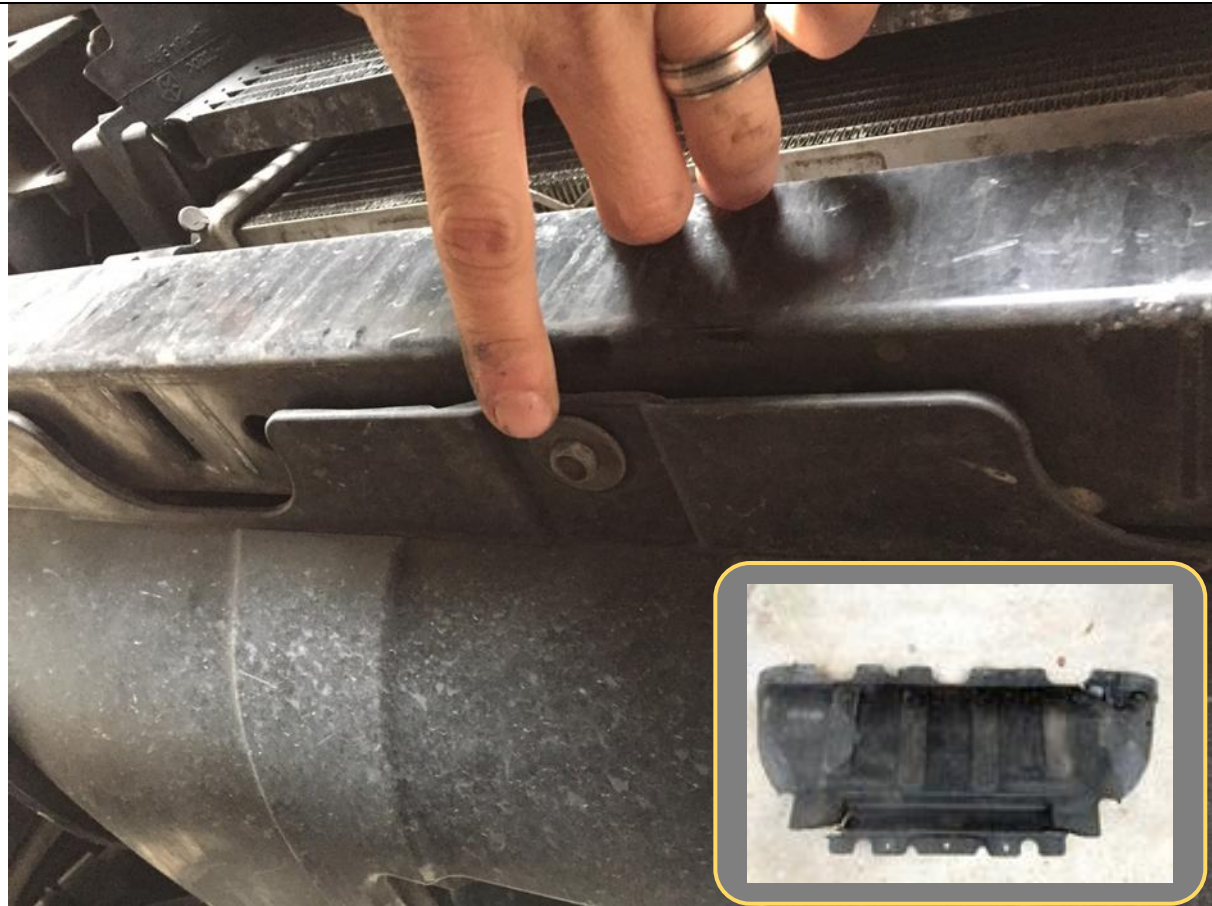
1. First step is to remove the lower air dam fascia. To do this climb under your Jeep and remove all 5 quarter turn clips by hand. Two are tucked up high in each corner and 3 in the middle.
2. Once they are removed pull the entire lower air dam away from Jeep by hand.

TOOLS REQUIRED

None

FASTENERS

Retain



3. Remove factory Lower Radiator Cover. 3x M6 bolts on front and 2x M8 bolts on back. Use 10mm socket or spanner for front and 13mm for rear.

TOOLS REQUIRED

10mm Socket or Spanner
13mm Socket or Spanner

FASTENERS

Retain for reuse



4. Remove factory tie down and or tow points

TOOLS REQUIRED**FASTENERS**

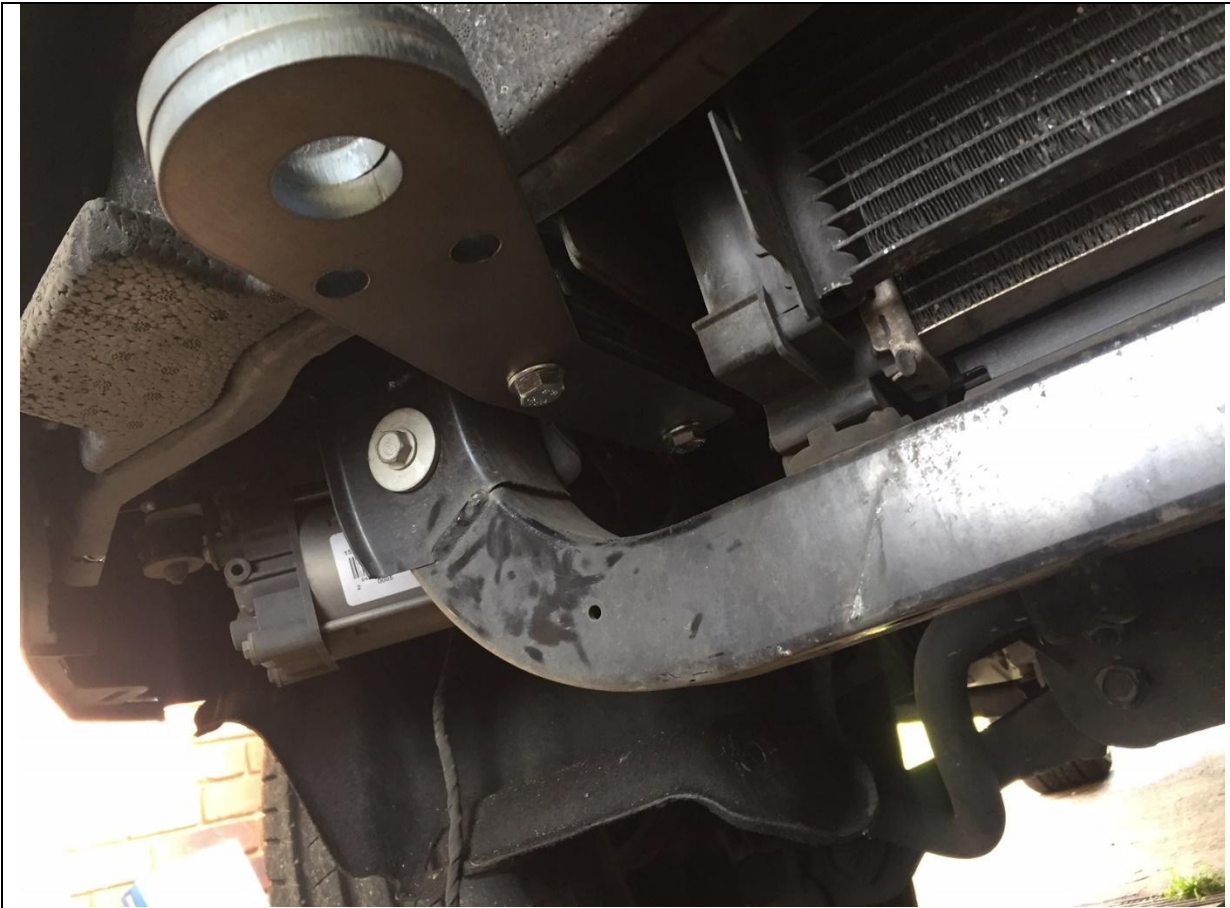
Discard fasteners



5. Stack Offroad Animal Tow points together as shown with M10 bolts and M10 flat washers.

TOOLS REQUIRED**FASTENERS**

M10x80 Hex bolts (4)
M10 Flat Washers (4)



6. Fit Offroad Animal Tow points as shown on LH and RH side with M10x80 bolts directly into frame of Jeep. Torque down bolts

TOOLS REQUIRED

16mm Socket or Spanner

FASTENERS

M10x80 (4)
M10 Flat washers (4)



7. Locate clearance windows as shown in lower air dam.

TOOLS REQUIRED**FASTENERS**



8. Push out panels to allow tow points to pass through. If yours do not push out, you will need to cut an access window in this area.

TOOLS REQUIRED**FASTENERS**



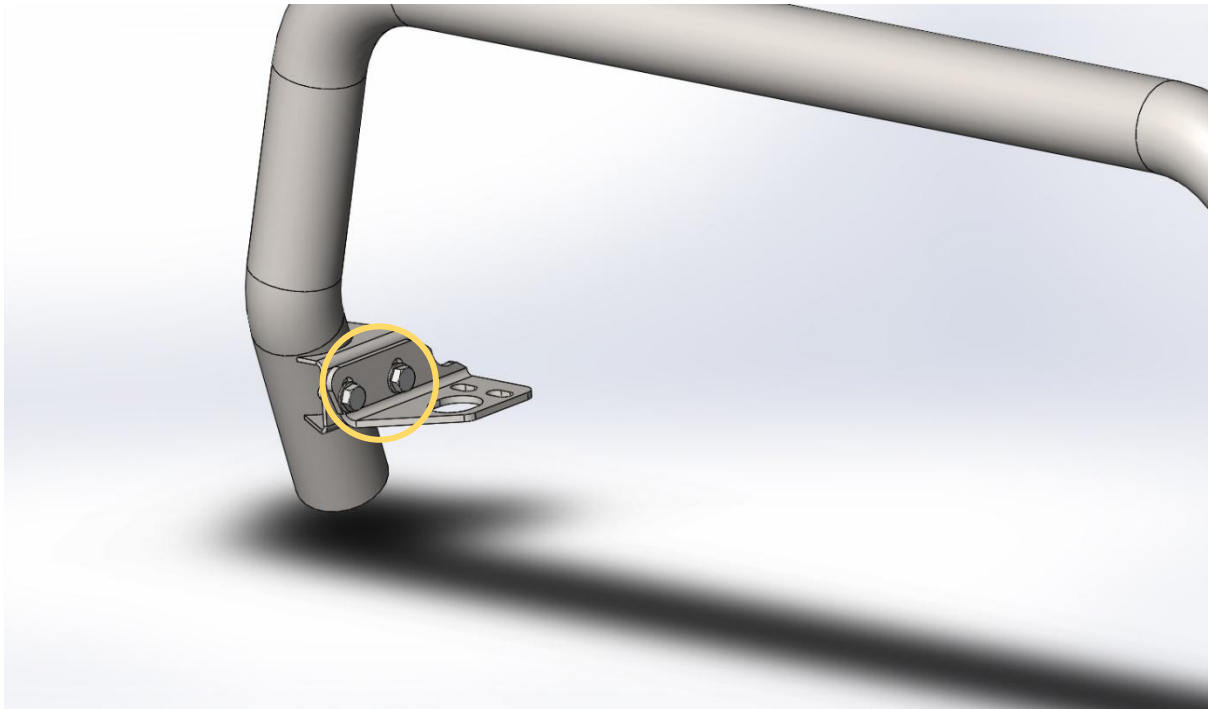
9. Refit lower skid and air dam with factory hardware.

TOOLS REQUIRED

10mm spanner or socket
13mm spanner or socket

FASTENERS

Factory hardware



10. Loosely fit mount brackets to nudge bar with M10x25 Hex bolts, washers and flange nuts.

There are two different types of mount bracket sets supplied. The one pictured above is B-0056.

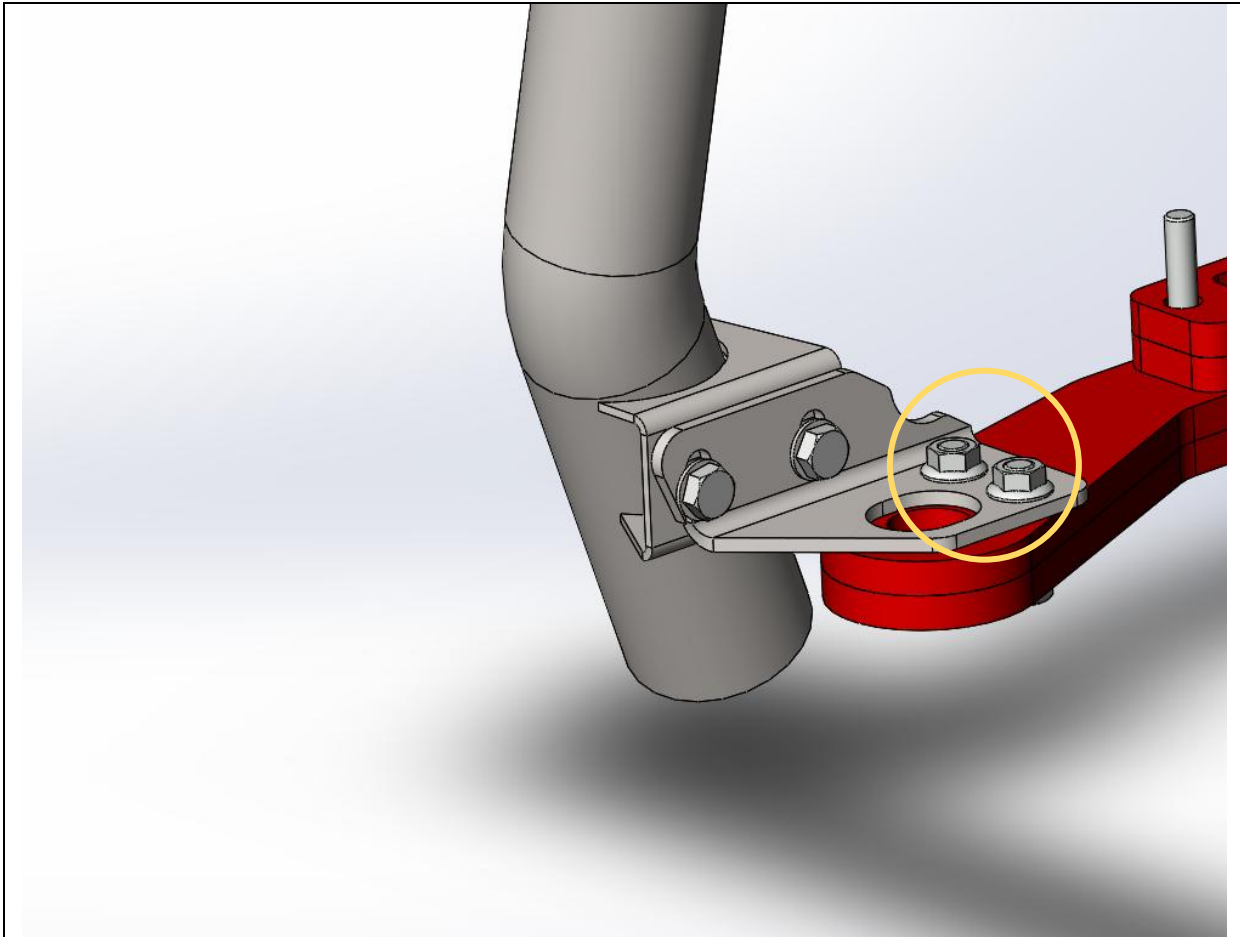
Only use B-0325 brackets if fitting with an Offroad Animal Pre Runner on a 2011-2013 or 2017-2020 model.

11. Repeat for other side

TOOLS REQUIRED

FASTENERS

M10x25 Hex bolt (4)
M10 Flat washer(4)
M10 Flange nut (4)



12. Put nudge bar on to tow points as shown. Feed mounting bolts up from underneath and secure with flange nuts.
13. Repeat for other side

TOOLS REQUIRED

16mm Spanner or socket

FASTENERS

M10x40 Hex bolts (4)
M10 Flat Washer (4)
M10 Flange nut (4)



14. Position the nudge bar, if you have forward parking sensors you will need to pivot the top of the nudge bar back as far as possible towards the Jeep, and lift it as high as it will go. Then torque down bolts.

TOOLS REQUIRED

16mm socket and spanner

FASTENERS



15. You're now done. Feel free to add clamps to the nudge bar for mounting accessories.

TOOLS REQUIRED**FASTENERS**